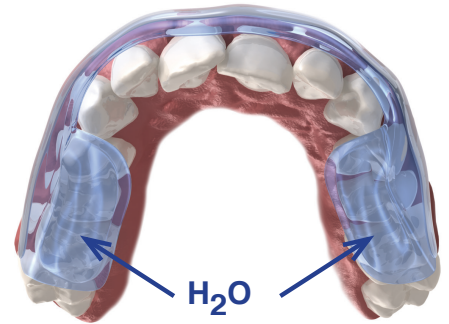


The Aqualizer's fluid system creates perfect bite balance and stability through a minimally invasive approach to TMJ treatment. It works by allowing the muscles themselves to automatically reposition the jaw to where it naturally works best. For TMJ pain relief, restoring this balance is essential.

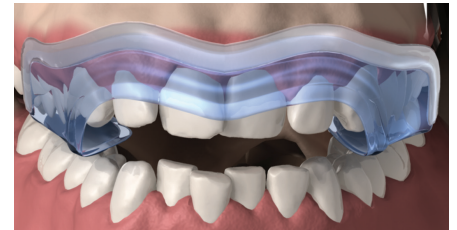
Unlike other available dental splints, the Aqualizer self-adjusting oral splint is a TMJ treatment which allows the body to unravel bite distortions and establish optimal systemic function and balance. The Aqualizer takes the uncertainty out of TMJ diagnosis and treatment. While other dental splints and TMJ treatment options can distort the jaw, causing TMJ pain, the Aqualizer facilitates relief through ideal occlusion automatically and naturally. The Aqualizer is also a perfect supplement in other medical disciplines besides dentistry. Today this device is integrated into physical therapy, osteopathy, orthodontic treatment, orthopedics and many other medical disciplines.

How the Aqualizer works

The Aqualizer® is an application of a basic physical law of nature called Pascal's Law, which states that an enclosed fluid will apply equalized fluid pressure regardless of where pressure is applied to the fluid. In other words, biting down on the Aqualizer® causes the fluid to distribute bite forces evenly across the bite, reducing TMJ pressure and pain and ensuring relief. Aqualizer® dental splints impose no preset changes. By contrast, they enable the body to naturally balance itself, resulting in TMJ pain relief and improved function.



Instant Hydrostatic Splint

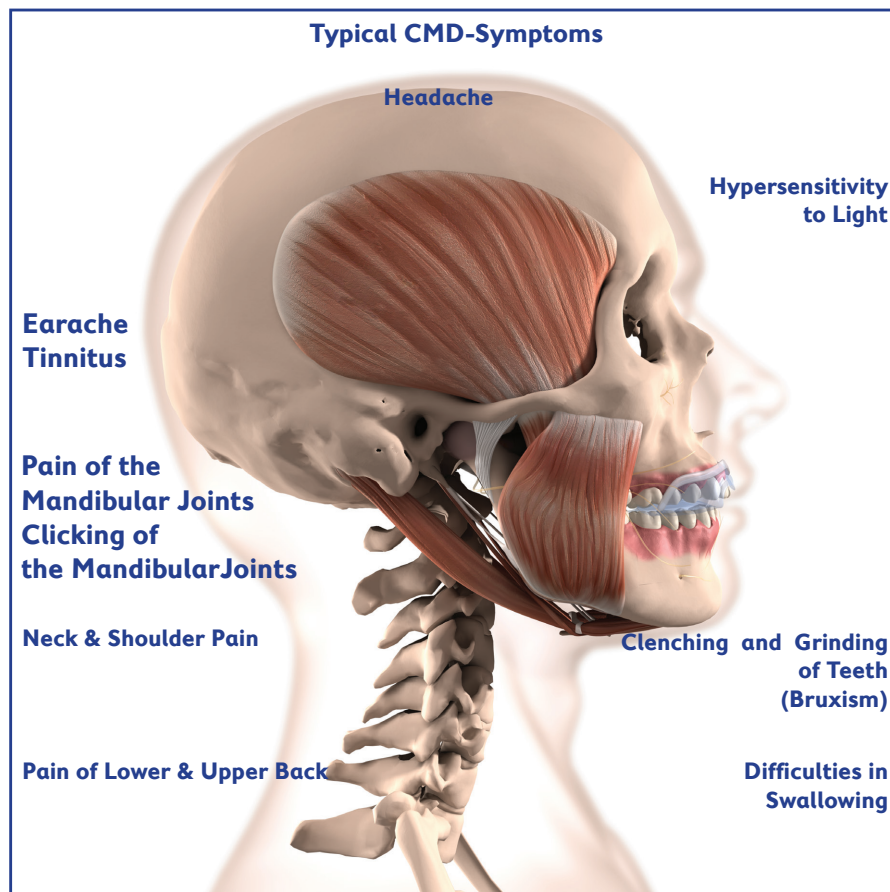


CMD Syndrome (TMD Syndrome)

The neuromuscular system of the head is extremely sensitive to all kinds of environmental influences. Stress and anger have to be compensated daily. The patient starts clenching and grinding teeth unconsciously. In the morning the patient wakes up with a serious headache especially in the temples and forehead. This tension headache is a sign of muscle tension of the major muscles of the head, neck, jaw and back. In many cases clenching or grinding of teeth can be caused by an occlusal high spot. The patient has the feeling that the new filling, crown or bridge is interfering with his bite. Automatically the patient is shifting the position of his jaw to a new habitual position, which can also interfere with the position of the mandible. Usually

the patient is treated with a customized splint (occlusal bite guard) made from various materials.

The Aqualizer is the first instant emergency and temporary self-adjusting oral splint filled with water. It is made of a non toxic durable plastic material which can even compensate high pressure forces. The Aqualizer's smooth, flexible surface permits the teeth to easily slide across it. The flexible fluid pads, positioned between the upper and lower occlusal surfaces, eliminate all occlusal contacts. Proprioceptive guidance is neutralized as the dominant factor in functional mandibular placement. The muscles respond instantly by moving the mandible into its most comfortable, least accommodated position. The Aqualizer's fluid system relieves pain by taking the pressure off the painful joints and muscles without any side effect.



Instructions of Use

Instant TMJ Splint

the **AQUALIZER**

How to select the right Aqualizer Model (Occlusal Height):

All models of the Aqualizer are available in three different vertical dimensions: "Low," "Medium," and "High". The vertical dimension (thickness) is controlled by the amount of fluid in the Aqualizer.

Medium volume Aqualizers (≈ 2 mm) are used by most (90%) patients

Low volume Aqualizers (≈ 1 mm) are for patients with inadequate freeway space (or those sensitive to anything in their mouths) who may find the minimal vertical dimension more comfortable. Also highly recommended as pretreatment before centric bite registration

High volume Aqualizers (≈ 3 mm) are used when a patient has excessive freeway space or needs a greater vertical dimension to fill the space between the upper and lower occlusal surfaces.

Insert the Aqualizer

Remove the Aqualizer from the package and place the Aqualizer in the upper jaw. Keep the fluid pads between the posterior teeth. You should relax and rest the teeth against the fluid pads when swallowing. It is not desirable to clench. You should have a gap between your incisors of min. 1 mm. There should be no occlusal contact. If you are missing your molar teeth the Aqualizer won't work. The Aqualizer is a waterbed system to rest the jaw. Patients should not continually bite with low pressure on the Aqualizer, rather, the teeth should rest in a relaxed way so that the chewing muscles relax. If you bite too strongly on the Aqualizer you may break it. If this happens, the distilled water will run out and the Aqualizer will be unusable. Wear the Aqualizer for as few hours as necessary to relieve discomfort, either while sleeping or during daytime periods of stress or facial jaw pain.

The Aqualizer is not indicated for patients with severe bruxism, unless used as a biofeedback device to break their parafunctional oral habit of clenching / grinding. If Aqualizers are destroyed within hours or one or two nights, the patient is a parafunctional bruxer / clencher. The Aqualizer® is not tough enough for them. These patient should be treated with a hard occlusal splint. For this indication the Aqualizer is a very effective muscle relaxer before starting a centric bite registration.

If Patient's Facial Jaw Pain Improves (During the first visit)

Pain relief confirms the diagnosis - pain is triggered or exacerbated by the occlusion. This facial jaw pain relief is a clear demonstration to both the doctor and the patient of the benefits that can be obtained by Aqualizer guided occlusal therapy. Relief of pain usually occurs within five to ten minutes after insertion of the Aqualizer, particularly in the episodic sufferer.

When to wear Aqualizer TMJ pain-relieving splints

Follow your therapist's instructions. They may have you wear the Aqualizer during, before, and after treatment. After an initial period of TMJ-Disorder diagnosis, Aqualizer splints are generally not worn unless symptoms are present. Patients usually wear an Aqualizer during periods of stress or pain. Simply insert the Aqualizer if you feel TMJ stress and headaches coming on. The Aqualizer should be worn for a minimum of 15 minutes or for twice the amount of time it previously took for initial relief to occur. To prolong its use-life, wear the Aqualizer as little as possible to control your TMJ pain. The Aqualizer is not designed as a permanent splint.

When should I replace the Aqualizer?

The Aqualizer is a temporary splint. Aqualizer splints may last up to several weeks, depending on how forcefully you clench or grind your teeth. Under normal use the amount of water inside the Aqualizer will be reduced by diffusion through the durable plastic membrane. This process is very slow and takes several months before an Aqualizer is flat. Check the Aqualizer to see if it has enough fluid. Without the fluid the Aqualizer is not effective and should be replaced. If you want to store the Aqualizer for a longer period you can freeze the Aqualizer to stop the process of diffusion.

How to clean the Aqualizer

After wearing, clean your Aqualizer with soap and water or mouthwash.

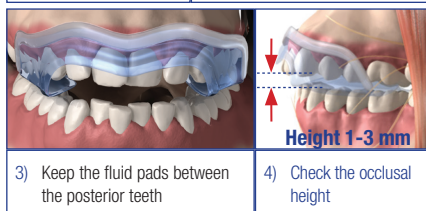
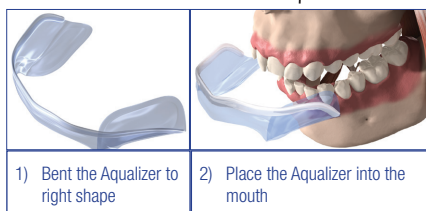
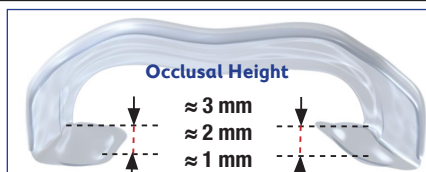
Side Effects

Do not wear the Aqualizer for more than eight hours in any 24-hour period, as this protects the oral tissues from unnecessary irritation. Stop using the Aqualizer and consult your doctor. If you have irritation only on the upper jaw, the Aqualizer can be used also on the lower jaw. The sharp edges of the Aqualizer sealing can be protected by using orthodontic wax or silicon material. Ask your dentist.

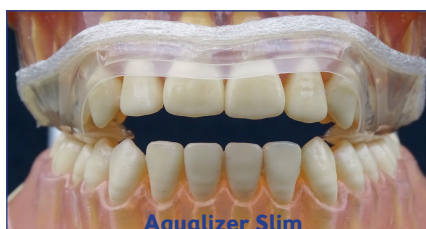
Do not wear an Aqualizer® if you lack a normal gag reflex.

Each Aqualizer is designed for single use only and can not be used on different patients. The Aqualizer is designed for temporary use only and can not substitute a dental treatment with a custom made hard occlusal splint.

The waterpads are not as hard and durable as natural teeth or a hard occlusal splint. Even though it has been never monitored, an elongation of the anterior teeth as well as drifting of teeth might occur.



Aqualizer Models



- anatomically shaped fit
- leaner, durable water-pads
- overall comfort



- comfortable fit
- bigger water-pads
- good retention



- smaller design for children and patients with small jaws
- can be used if missing the molar teeth

Aqualizer	Design	Vertical Dimension	REF-No.
Aqualizer	new Design	high ≈ 3 mm	AQ 300
Aqualizer	new Design	medium ≈ 2 mm	AQ 301
Aqualizer	new Design	low ≈ 1 mm	AQ 304
Aqualizer	ultra	high ≈ 3 mm	AQ 305
Aqualizer	ultra	medium ≈ 2 mm	AQ 306
Aqualizer	ultra	low ≈ 1 mm	AQ 307
Aqualizer	ultra mini	high ≈ 3 mm	AQ 308
Aqualizer	ultra mini	medium ≈ 2 mm	AQ 309
Aqualizer	ultra mini	low ≈ 1 mm	AQ 310



© 2013-08 • Dentrade International e.K. • 50737 Köln • Germany • All treatments shown in this brochure are only recommendations to the dentists/ doctors. The companies Dentrade e.K. and Jumar Co. are not responsible for results of misusing the Aqualizer. The Aqualizer™ ist a registered Trademark of Jumar Corp., Prescott AZ, USA

Exclusive Representative Europe & East-Europe:

Dentrade International e.K.
Monheimer Str.13
D-50737 Cologne • Germany
Phone: +49(0)221-9742834
Fax: +49(0)221-9742836
Internet: www.aqualizer.de
email: info@aqualizer.de

www.aqualizer.de